

Xavier University of Louisiana

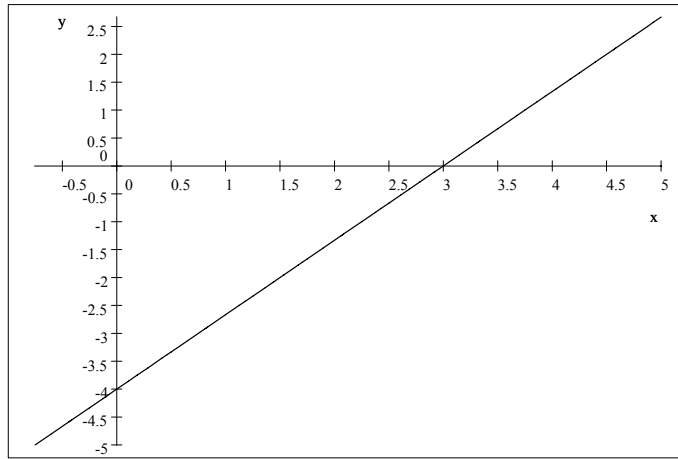
Study Guide for the Xavier Mathematics Placement Test

8. Graphing linear and quadratic equations

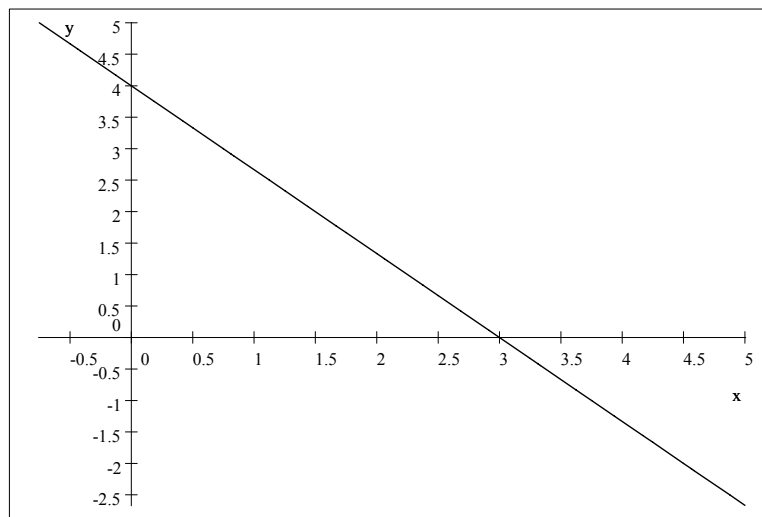
Multiple Choice Practice Problems

1 Sketch the graph of  $4x + 3y = 12$

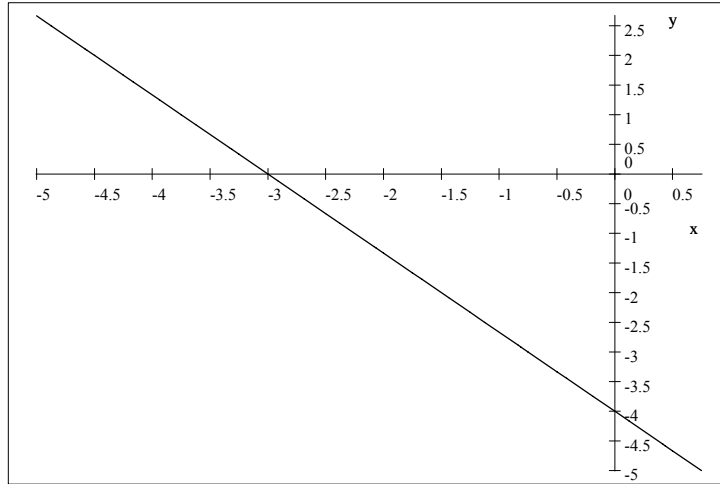
a.



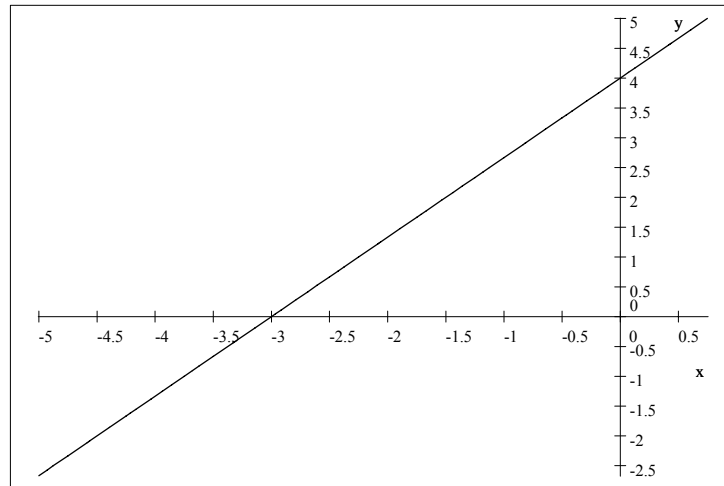
b.



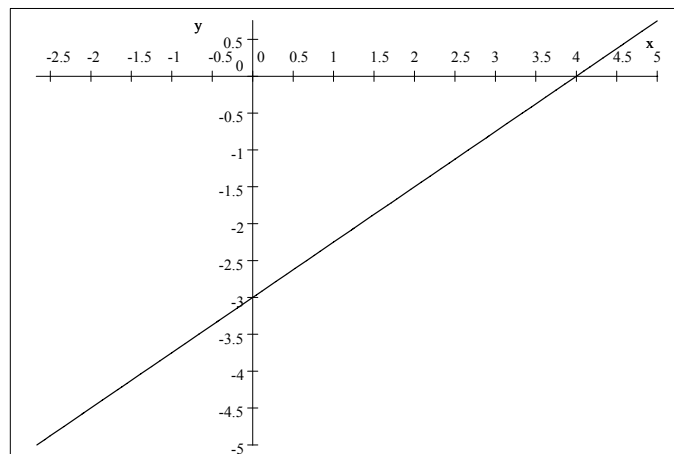
c.



d.

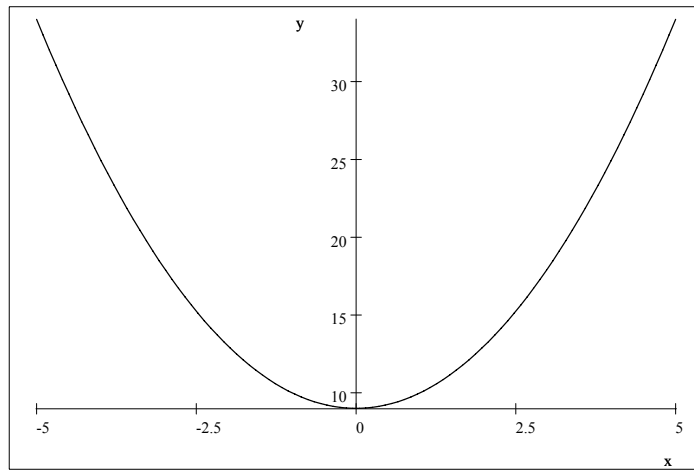


e.

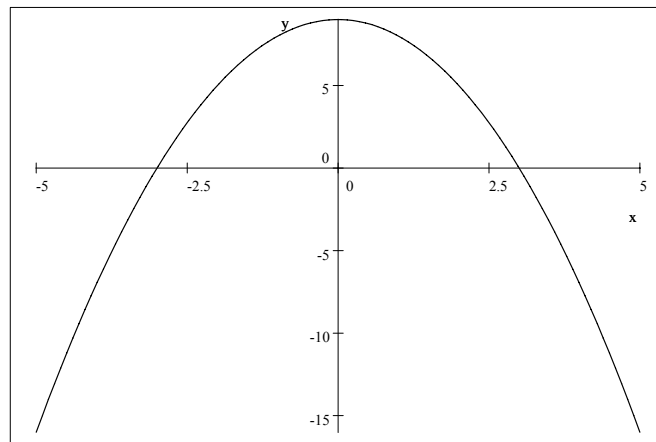


2 Sketch the graph of  $y = x^2 - 9$

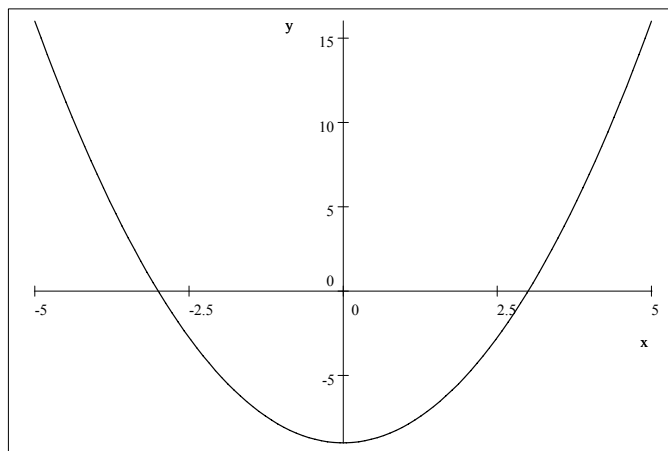
a.



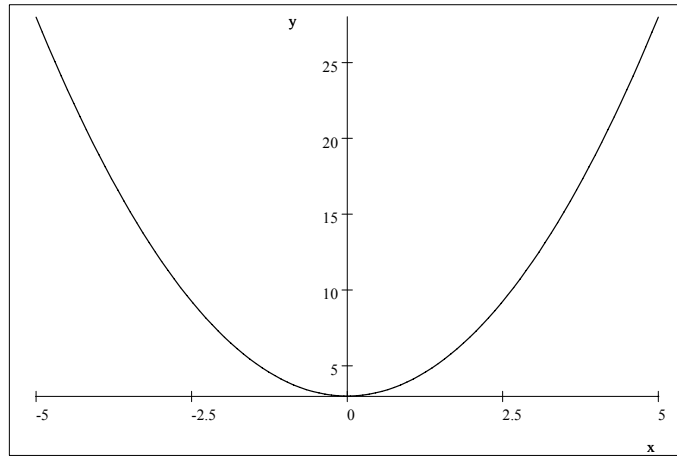
b.



c.



d.



e.

